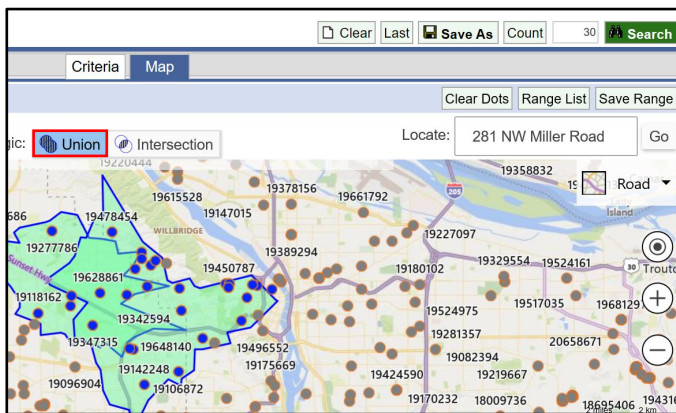
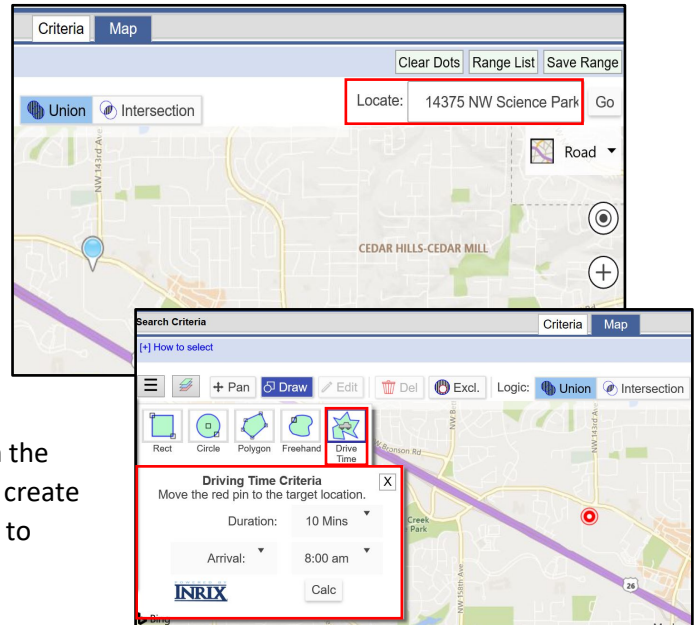


RMLS™ Drive Time by INRIX

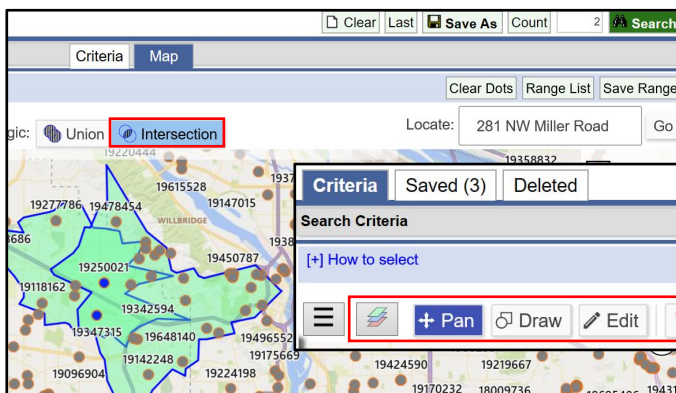
The new Drive Time Map Search feature on RMLSweb allows you to visually search for properties by geographic location utilizing real time streaming data feed resources. This will help when a client would like to arrive or depart certain destinations, office or day care for example, by a certain time.

Getting Started Navigate to any Map Search in RMLSweb. To start, click in the **“Locate”** box at the top right of the map. Enter the address and click on **“Go”** to place a marker on the map. Click on Draw, located at the top left of the map, and select **Drive Time**. Enter duration and arrival or departure time and click on Calc button. A shape will appear on the map. If there is an additional location, follow the same steps to create a second shape on the map. To perform a search, you will need to complete the Property Categories, Status and Price fields. The maximum number of shapes with Map Search is 10.



The default setting within shapes is **Union** (center, above the map), meaning that the Count button will show the number of listings within both shapes. If changed from Union to **Intersection**, the Count button will show listings in common, between the shapes. Once you are satisfied with the number of listings when clicking on Count, then click Search.

At the top left, above the map, there are **option buttons** including Layers (zip code, neighborhood, etc.), Draw (to draw additional shapes), Edit and Clear Map.



Saving Your Search To save your search criteria, click Save As. A pop-up menu will ask you to enter a name for your search. Once you have done so, click OK. Now your search criteria is saved and you can retrieve it at the top

of the Map Search page by clicking on the **Saved tab**.

